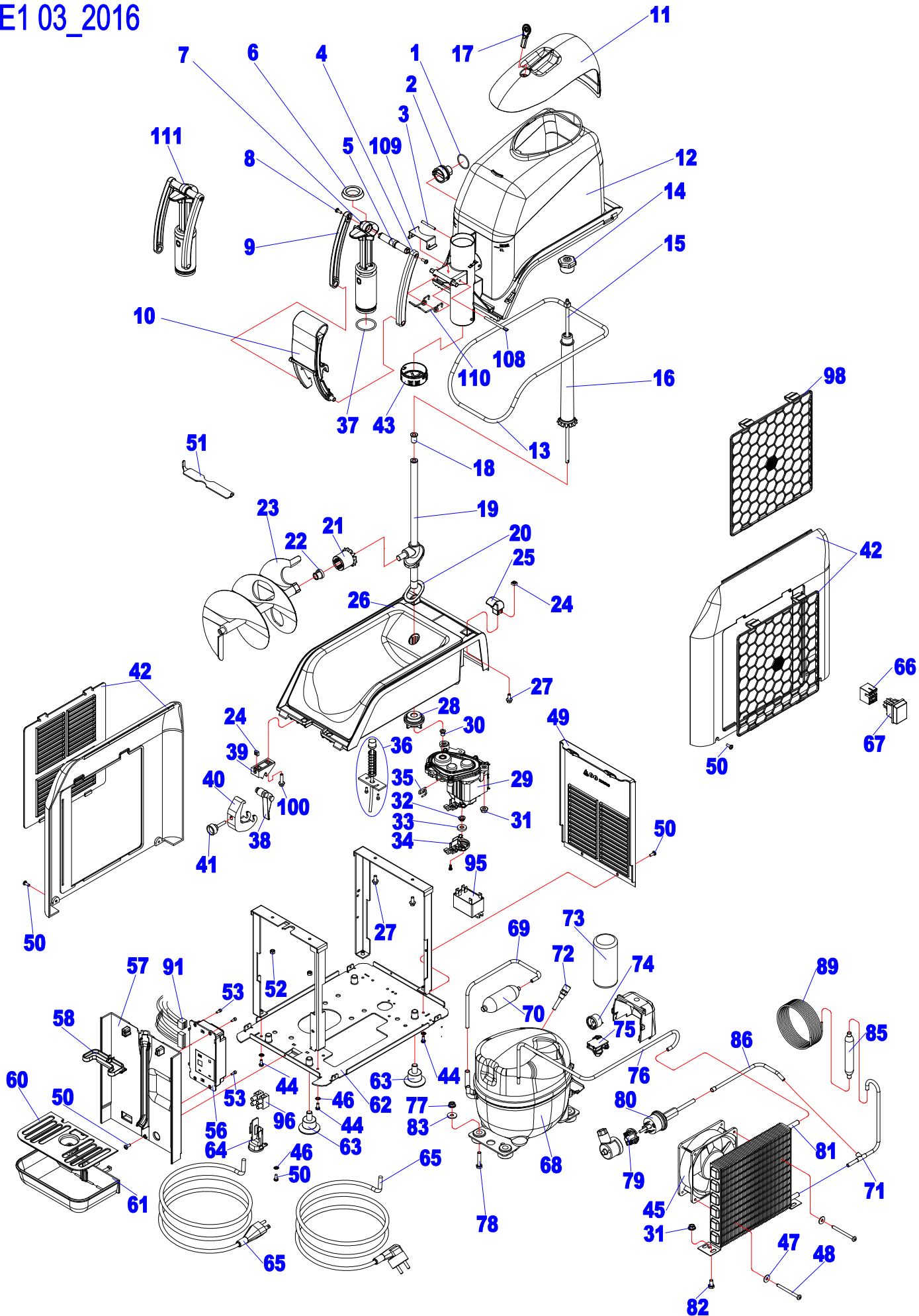
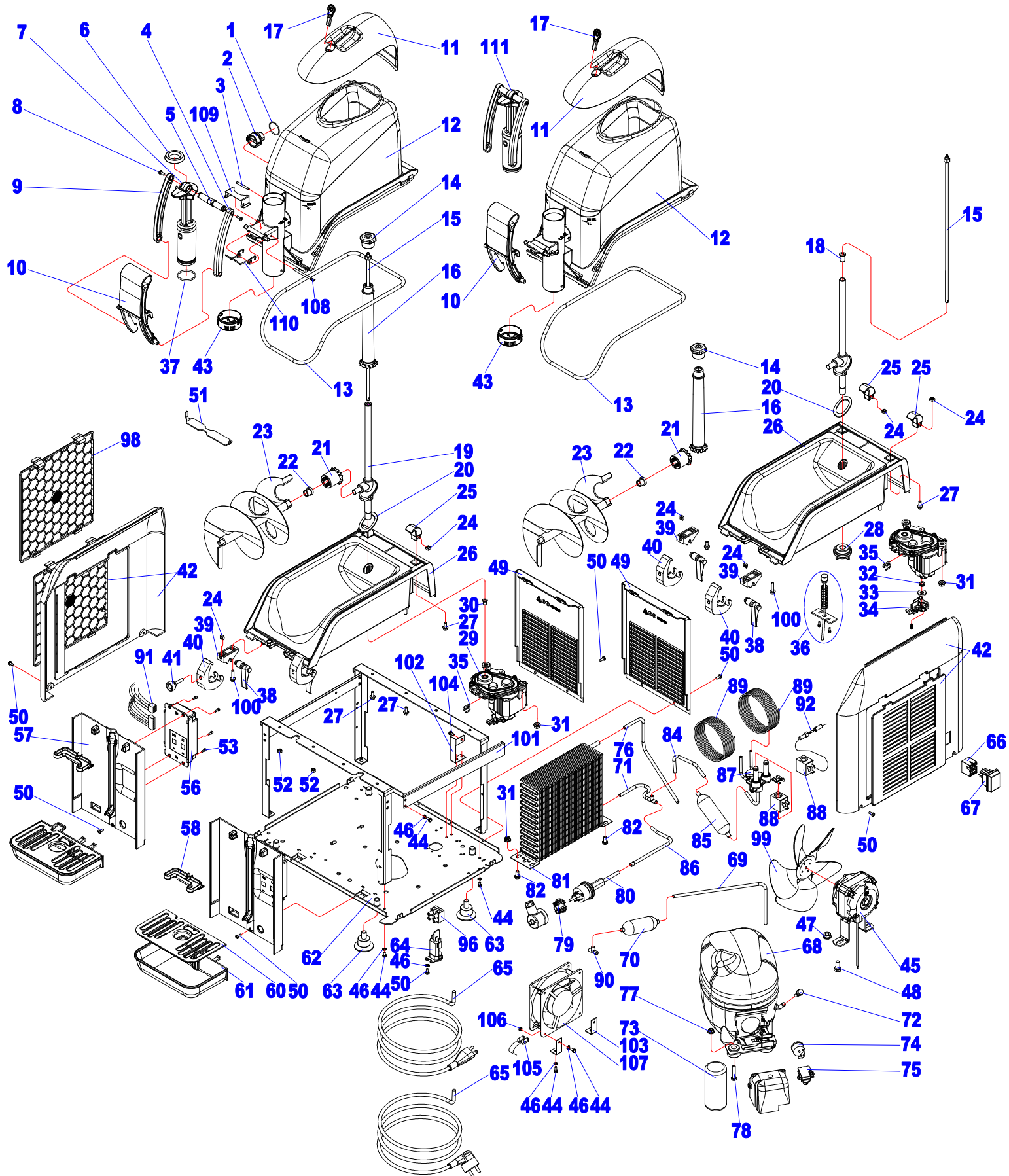


# B LARGE1 03\_2016



# B LARGE2 03\_2016



# BLarge: Listino Ricambi\Spare Part Price List Marzo\March 2016

BL

NOTA ! I prezzi in dollari sono dedicati al Mercato Americano  
NOTE ! The prices in Dollars are dedicated to the America Market

CODICE	ESP.	DESCRIZIONE	DESCRIPTION	FREON	BL1	BL2	115/ 60	230/ 50	220/ 60	100/50- 60	USD	EUR
B0004107-002	1	GUARNIZIONE TENUTA MANICOTTO OR2106	FOOD RED SYLICON SLEEVE HOLDING GASKET OR2106	ALL	*	*	*	*	*	*	1,65	0,79
B0004101-002	2	MANICOTTO QUICKREAM	QUICKREAM SLEEVE	ALL	*	*	*	*	*	*	33,10	15,91
B0000110-001	3	SPINA CILINDRICA 4X35MM INOX A2	STEEL CYLINDRICAL PLUG 4X35MM	ALL	*	*	*	*	*	*	2,66	1,28
B0003108-002	4	PONTE DESTRO LEVA NERO	BLACK RIGHT LEVER CONNECTION	ALL	*	*	*	*	*	*	7,71	3,71
B0003106-001	5	ASSE CONGIUNZIONE PONTI DELRIN+OTTO	CONNECTIONS JUNCTION AXISIS	ALL	*	*	*	*	*	*	11,35	5,46
B0003111-001	6	GUARNIZIONE GOLA RUBINETTO SILICONE DE156	SILICON TAP RELIEF GASKET DE156	ALL	*	*	*	*	*	*	24,83	11,94
B0003109-003	7	PISTONE SCARICO COMPLETO QUICKREAM	QUICKREAM COMPLETE DRAIN PISTON	ALL	*	*	*	*	*	*	94,89	45,62
P0006105-001	8	VITE TC CROCE M4X10MM INOX	STEEL SCREW	ALL	*	*	*	*	*	*	0,81	0,39
B0003107-002	9	PONTE SINISTRO LEVA NERO	BLACK LEFT HANDLE BRIDGE	ALL	*	*	*	*	*	*	7,71	3,71
B0003120-001	10	ASSIEME LEVA CON SPINA B0003114	COMPLETE BLACK HANDLE WITH PIN	ALL	*	*	*	*	*	*	33,28	16,00
B0006109-002	11	CUPOLA CON SERRATURA	TRANSPARENT COVER WITH LOCK	ALL	*	*	*	*	*	*	48,55	23,34
B0000102-003	12	VASCA TRASPARENTE QUICKREAM COMPLETA DI MANICOTTO	QUICKREAM TRANSPARENT TANK WITH SLEEVE	ALL	*	*	*	*	*	*	158,77	76,33
L0000106-001	13	GUARNIZIONE VASCA BB/QK	TANK GASKET BB/QK	ALL	*	*	*	*	*	*	14,29	6,87
M0000107-001	14	GHIERA FISSAGGIO ELICA VERTICALE QK POM+INOX	QK VERTICAL BLADE FIXING RING	ALL	*	*	*	*	*	*	16,73	8,04
B0000106-001	15	ALBERO TRASMISSIONE CON DADO INOX	STEEL SHAFT WITH STEEL NUT	ALL	*	*	*	*	*	*	35,31	16,97
B0004105-002	16	ELICA VERTICALE + BOCCOLA INOX + INGRANAGGIO QK VERSIONE 2014	QUICKREAM VERTICAL AUGER + BUSHING + GEAR 2014 VERS.	ALL	*	*	*	*	*	*	44,13	21,22
B0006113-001	17	CHIAVE SERRATURA CUPOLA	KEY FOR TRANSPARENT COVER WITH LOCK	ALL	*	*	*	*	*	*	13,24	6,37
M0000104-001	18	BOCCOLA CANOTTO TRASMISSIONE POM	TRANSMISSION SHAFT BUSHING	ALL	*	*	*	*	*	*	5,01	2,41
B0000103-003	19	CANOTTO TRASMISSIONE QK CON BOCCOLA VERSIONE 2014	QUICKREAM TRANSMISSION SHAFT WITH BUSHING 2014 VERS.	ALL	*	*	*	*	*	*	123,57	59,41
A0000114-001	20	GUARNIZIONE O-RING CANOTTO TRASMISSIONE VERSIONE 2012	TRANSMISSION SHAFT ORING 2012 VERSION	ALL	*	*	*	*	*	*	8,34	4,01
M0004105-002	21	PIGNONE ELICA ORIZZONTALE	HORIZONTAL AUGER GEAR	ALL	*	*	*	*	*	*	10,18	4,89
M0004102-002	22	BOCCOLA ELICA ORIZZONTALE VERS. 2012	HORIZONTAL AUGER BUSHING 2012 VERS.	ALL	*	*	*	*	*	*	4,37	2,10
L0004103-002	23	ELICA ORIZZONTALE COMPLETA DI BOCCOLA VERS. 2012	HORIZONTAL AUGER COMPLETE OF BUSHING 2012 VERS.	ALL	*	*	*	*	*	*	233,97	112,49
M0000120-001	24	DADO QUADRO M5 ZINCATO	M5 SQUARE NUT	ALL	*	*	*	*	*	*	2,67	1,28
M0006103-003	25	CERNIERA POSTERIORE NERO	BLACK REAR HINGE	ALL	*	*	*	*	*	*	10,17	4,89
L0002113-004	26	ASSIEME VASCA COMPLETA NERO NUOVA SERPENTINA RETTANGOLARE	BIG BIZ COMPLETE BLACK TANK NEW EVAPORATOR	ALL	*	*	*	*	*	*	469,14	225,55
M0001101-001	27	VITE TE FLANGIATA M5X12MM	SCREW TE 5X12MM	ALL	*	*	*	*	*	*	1,74	0,84
M0000105-001	28	GHIERA FISSAGGIO CANOTTO	RING NUT SHAFT FASTENING	ALL	*	*	*	*	*	*	5,01	2,41
M0005139-001	29	ASSIEME MOTORIDUTTORE CON CELLA DI HALL	COMPLETE GEAR MOTOR WITH HALL SENSOR	ALL	*	*	*	*	*	*	500,96	240,85
A0000117-001	30	BOCCOLA CENTRAGGIO MOTORID./ALBERO	GEAR MOTOR BUSHING	ALL	*	*	*	*	*	*	2,21	1,0609

# BLarge: Listino Ricambi\Spare Part Price List Marzo\March 2016

BL

NOTA ! I prezzi in dollari sono dedicati al Mercato Americano  
NOTE ! The prices in Dollars are dedicated to the America Market

CODICE	ESP.	DESCRIZIONE	DESCRIPTION	FREON	BL1	BL2	115/ 60	230/ 50	220/ 60	100/50- 60	USD	EUR
DADOD.6ZFL	31	DADO M6 FLANGIATO	M6 NUT	ALL	*	*	*	*	*	*	0,81	0,39
B1071234	32	BUSSOLA TRASCINAMENTO MAGNETE	MAGNET SLEEVE	ALL	*	*	*	*	*	*	50,75	24,40
M1551004	33	MAGNETE PERMANENTE	PERMANENT MAGNET	ALL	*	*	*	*	*	*	22,07	10,61
A0000123-001	34	KIT CONTENITORE COMPLETO DI SCHEDA CELLA HALL ELCO	KIT COMPLETE PLASTIC COVER WITH HALL CELL ELCO	ALL	*	*	*	*	*	*	107,12	51,50
C025006	34	SCHEDA CELLA HALL KENTA	HALL CELL KENTA	ALL	*	*	*	*	*	*	53,56	25,75
A0001104-001	35	SPINA BLOCCAGGIO MOTOR./ALBERO TRASMISSIONE	GEAR MOTOR/TRANSMISSION SHAFT PIN	ALL	*	*	*	*	*	*	8,32	4,00
M0000157-002	36	ASSIEME SONDA TERMOSTATO ELETTRONICO FC-BB 2015	FC-BB ELECTRONIC THERMOSTAT PROBE COMPLETE 2015 VERS.	ALL	*	*	*	*	*	*	37,88	18,21
B0003112-002	37	GUARNIZIONE OR SILICONE PISTONE OR3118	PISTON SILICON GASKET OR 3118	ALL	*	*	*	*	*	*	7,61	3,66
M0006115-003	38	CERNIERA ANTERIORE NERO	BLACK FRONT HINGE	ALL	*	*	*	*	*	*	14,52	6,98
M0006116-003	39	BASE NERO	BLACK BASE	ALL	*	*	*	*	*	*	10,17	4,89
M0006102-003	40	GANCIO CERNIERA NERO	BLACK HINGE HOOK	ALL	*	*	*	*	*	*	14,52	6,98
M0006119-001	41	MANOPOLA FISSAGGIO GANCI M5X25mm	LOCKING BOLT	ALL	*	*	*	*	*	*	15,05	7,24
L0006131-001	42	KIT FIANCHI DX+SX+FILTRO ARIA+ALETTATURA NERO	KIT PLASTIC PANEL RIGHT+LEFT+AIR FILTER+LOUVER BLACK	ALL	*	*	*	*	*	*	168,81	81,16
L0006131-003	42	KIT FIANCHI DX+SX+FILTRO ARIA+ALETTATURA GIALLO	KIT PLASTIC PANEL RIGHT+LEFT+AIR FILTER+LOUVER YELLOW	ALL	*	*	*	*	*	*	168,81	81,16
L0006131-004	42	KIT FIANCHI DX+SX+FILTRO ARIA+ALETTATURA BLU	KIT PLASTIC PANEL RIGHT+LEFT+AIR FILTER+LOUVER BLUE	ALL	*	*	*	*	*	*	168,81	81,16
L0006131-005	42	KIT FIANCHI DX+SX+FILTRO ARIA+ALETTATURA BIANCO	KIT PLASTIC PANEL RIGHT+LEFT+AIR FILTER+LOUVER WHITE	ALL	*	*	*	*	*	*	168,81	81,16
B0003101-001	43	EROGATORE SOFT STELLA QUICKREAM	STAR SUPPLY VALVE	ALL	*	*	*	*	*	*	7,61	3,66
VTTE4X10Z	44	VITE TE 4X10 ZINCATA	SCREW TE 4X10MM	ALL	*	*	*	*	*	*	0,82	0,40
LA105101-001	45	MOTOVENTILATORE 17W 115V/50-60HZ	FAN MOTOR 17W 115V/50-60HZ	ALL	*		*			*	91,00	43,75
LD105106-001	45	MOTOVENTILATORE FP-108EXM-220 230V 50/60HZ	FAN MOTOR FP-108EXM-220 230V 50/60HZ	ALL	*			*	*		110,33	53,05
AD005102-001	45	MOTOVENTILATORE 82CE-2010/77 230V/50-60HZ	FAN MOTOR 82CE-2010/77 230V/50-60HZ	ALL		*		*	*		79,86	38,39
A5005101-001	45	MOTOVENTILATORE 82UL-2009/32 115V/60HZ	FAN MOTOR 82UL-2009/32 115V/60HZ	ALL		*	*			*	79,86	38,39
ROND.D.4.3EDENT	46	RONDELLA DENTELLATA D.4,3	INDENTED WASHER D.4,3	ALL	*	*	*	*	*	*	0,80	0,38
M0000123-001	47	RONDELLA PIANA 5X15	FLAT WASHER 5X15MM	ALL	*		*	*	*	*	0,46	0,22
DADOD.8ZFL	47	DADO M8 FLANGIATO	M8 NUT	ALL		*	*	*	*	*	0,81	0,39
VTTTC4,8X60Z	48	VITE TC 4.8X50MM CROCE	SCREW TC 4.8X50MM	ALL	*		*	*	*	*	0,81	0,39
VTTE8X16Z	48	VITE TE 8X16MM	SCREW TE 8X16MM	ALL		*	*	*	*	*	0,81	0,39
L0106101-001	49	PANNELLO POSTERIORE ABS V0 NERO CON ALETTATURA	BACK PANEL BLACK PLASTIC WITH LOUVERS	ALL	*	*	*	*	*	*	103,98	49,99
M0006124-001	50	VITE TC 3.9X9.5MM CROCE	SCREW TC 3.9X9.5MM	ALL	*	*	*	*	*	*	0,73	0,35

# BLarge: Listino Ricambi\Spare Part Price List Marzo\March 2016

BL

NOTA ! I prezzi in dollari sono dedicati al Mercato Americano  
NOTE ! The prices in Dollars are dedicated to the America Market

CODICE	ESP.	DESCRIZIONE	DESCRIPTION	FREON	BL1	BL2	115/ 60	230/ 50	220/ 60	100/50- 60	USD	EUR
B0003113-001	51	UTENSILE RIMOZIONE GUARNIZIONE B0003111-001 "DE156"	GASKET REMOVAL TOOL FOR B0003111-001 CODE	ALL	*	*	*	*	*	*	11,95	5,75
DADOD.5Z	52	DADO M5 ZINCATO	M5 NUT	ALL	*	*	*	*	*	*	0,82	0,40
M0000156-001	53	VITE TCEI M3X8MM	SCREW TCEI 3X8MM	ALL	*	*	*	*	*	*	0,81	0,39
L0005105-001	56	ELETTRONICA BB 230V STANDARD 2/5/8	ELECTRONIC BOARD 230V REV 01 STANDARD	ALL	*	*		*	*		259,97	124,98
L0005105-005	56	ELETTRONICA BB 230V 2/5/8 + DISPLAY TEMPERATURA	ELECTRONIC BOARD 230V REV 04	ALL	*	*		*			278,04	133,67
L0005102-001	56	ELETTRONICA COMPLETA 100-115V	ELECTRONIC BOARD 100-115V REV. 01	ALL	*	*	*			*	259,97	124,98
L0106102-002	57	PANNELLO FRONTALE ABS V0 NERO VERSIONE 2012	FRONT PANEL BLACK PLASTIC ABS 2012 VERSION	ALL	*	*	*	*	*	*	259,97	124,98
A0006115-001	58	CASSETTO RACCOLTA CONDENSA BB VERSIONE 2012	CONDENSATE DRIP TRAY	ALL	*	*	*	*	*	*	22,07	10,609
M0006117-001	60	GRIGLIA SGOCCIOLATOIO ABSV0 NERO	BLACK PLASTIC DRIP TRAY ABSV0	ALL	*	*	*	*	*	*	27,01	12,99
M0006110-004	61	SGOCCIOLATOIO CONDENSA NERO	BLACK DRIP TRAY	ALL	*	*	*	*	*	*	33,39	16,05
L0101109-001	62	STRUTTURA COMPLETA BIG BIZ 1	BIG BIZ 1 STRUCTURE	ALL	*		*	*	*	*	180,06	86,57
L0201108-001	62	STRUTTURA COMPLETA BIG BIZ 2	BIG BIZ 2 STRUCTURE	ALL		*	*	*	*	*	202,57	97,39
PAR114-ELGR	63	PIEDINO STANDARD	RUBBER FEET	ALL	*	*	*	*	*	*	6,53	3,14
M0005112-001	64	MORSETTIERA PA84/E	CONNECTION FOR SUPPLYING WIRING	ALL	*	*	*	*	*	*	18,87	9,07
CAVOAL.UL15ALAV	65	CAVO ALIMENTAZIONE USA 15A/125V 14AWG UL	POWER CORD 115 V U.L. FOR USA	ALL	*	*	*				37,78	18,16
C013COD.1373	65	CAVO ALIMENTAZIONE SCHUKO 16A/230V 3x1,5mmq	SCHUKO POWER CORD	ALL	*	*		*	*		37,78	18,16
ASS.CAVO-SPINA	65	CAVO ALIMENTAZIONE UK 13A/250VAC 3x1,5mmq	POWER CORD FOR UK	ALL	*	*		*			37,78	18,16
AF005101-001	65	CAVO ALIMENTAZIONE JAPAN PSE 15A/125V	POWER CORD 100V PSE JAPAN	ALL	*	*	*			*	66,20	31,83
A0005106-001	66	BLOCCHETTO X INTERRUOTTORE SERIE 82	MOLEX CONNECTOR FOR MAIN SWITCH	ALL	*	*	*	*	*	*	0,71	0,34
I82L2206165	67	INTERRUPTORE GENERALE	MAIN SWITCH	ALL	*	*	*	*	*	*	20,32	9,77
L5102103-001	68	COMPRESSORE NEK2117GK 115V/60HZ-100V/50HZ	NEK2117GK 115V/60HZ-100V/50HZ COMPRESSOR	R404A	*		*			*	463,40	222,79
L2102101-001	68	COMPRESSORE EMT2117GK 220-240V/50HZ	EMT2117GK 220-240V/50HZ COMPRESSOR	R404A	*			*			450,16	216,42
A5402101-001	68	COMPRESSORE NEK2125GK 115V/60HZ-100V/50HZ	NEK2125GK 115V/60HZ-100V/50HZ COMPRESSOR	R404A		*	*			*	511,95	246,13
C971IA5166AD	68	COMPRESSORE NE2125GK 220-240V/50HZ	NE2125GK 220-240V/50HZ COMPRESSOR	R404A		*		*			499,04	239,92
A2402102-001	68	COMPRESSORE EMT2130GK 220-240V/50HZ	EMT2130GK 220-240V/50HZ COMPRESSOR	R404A		*		*			499,04	239,92
A3402101-001	68	COMPRESSORE NEK2134GK 208-230V/60HZ	NEK2134GK 208-230V/60HZ COMPRESSOR	R404A		*			*		511,95	246,13
L0102106-001	69	TUBO RAME D.6 BOYLER-COMPRESSORE BB1	BB1 ACCUMULATOR-COMPRESSOR D.6 PLATE PIPE	ALL	*		*	*	*	*	13,02	6,26
L0202102-001	69	TUBO RAME D.6 BOYLER-COMPRESSORE BB2	BB2 ACCUMULATOR-COMPRESSOR D.6 PLATE PIPE	ALL		*	*	*	*	*	13,02	6,26
M0102112-001	70	BOYLER	ACCUMULATOR	ALL	*	*	*	*	*	*	4,68	2,25
L0102112-001	71	ASSIEME TUBI RAME D.6MM CONDENSATORE-TEE-FILTRO BB1	KIT COPPER PIPE D.6MM CONDENSER-CUPPER TEE-FILTER BB1	ALL	*					*	18,01	8,66
L0102113-001	71	ASSIEME TUBI RAME D.6MM CONDENSATORE-TEE-TEE-FILTRO BB1	KIT COPPER PIPE D.6MM CONDENSER-CUPPER TEE-CUPPER TEE-FILTER BB1	ALL	*		*				16,77	8,06
L0102106-001	71	TUBO RAME D.6MM CONDENSATORE-FILTRO BB1	BB1 ACCUMULATOR-COMPRESSOR D.6 PLATE PIPE	ALL	*			*	*		13,02	6,26

# BLarge: Listino Ricambi\Spare Part Price List Marzo\March 2016

BL

NOTA ! I prezzi in dollari sono dedicati al Mercato Americano  
NOTE ! The prices in Dollars are dedicated to the America Market

CODICE	ESP.	DESCRIZIONE	DESCRIPTION	FREON	BL1	BL2	115/ 60	230/ 50	220/ 60	100/50- 60	USD	EUR
L0202106-001	71	ASSIEME TUBI RAME D.6MM CONDENSATORE-TEE BB2	KIT COPPER PIPE D.6MM CONDENSER-CUPPER TEE BB2	ALL		*	*	*	*	*	18,01	8,66
A0002110-001	72	VALVOLA DI CARICA+TUBO RAME D.6MM 4CM BB1/2	CHARGE VALVE+ COPPER PIPE D.6MM 4CM BB1/2	ALL	*	*	*	*	*	*	8,39	4,03
L2105104-001	73	CONDENSATORE AVVIAMENTO COMPRESSORE EMT2117GK 220-240V/50HZ	START CAPACITOR EMT2117GK 220-240V/50HZ	R404A	*			*			60,11	28,90
L5105106-001	73	CONDENSATORE AVVIAMENTO COMPRESSORE NEK2117GK 115V/60HZ-100V/50HZ	START CAPACITOR NEK2117GK 115V/60HZ-100V/50HZ	R404A	*		*			*	60,11	28,90
A3405103-001	73	CONDENSATORE AVVIAMENTO COMPRESSORE NEK2134GK 208-230V/60HZ	START CAPACITOR NEK2134GK 208-230V/60HZ	R404A		*			*		60,11	28,90
COND2252092	73	CONDENSATORE AVVIAMENTO COMPRESSORE NE2125GK 220-240V/50HZ	START CAPACITOR NE2125GK 220-240V/50HZ	R404A		*		*			60,11	28,90
A2405103-001	73	CONDENSATORE AVVIAMENTO COMPRESSORE EMT2130GK 220-240V/50HZ	START CAPACITOR EMT2130GK 220-240V/50HZ	R404A		*		*			60,11	28,90
A5405103-001	73	CONDENSATORE AVVIAMENTO COMPRESSORE NEK2125GK 115V/60HZ-100V/50HZ	START CAPACITOR NEK2125GK 115V/60HZ-100V/50HZ	R404A		*	*			*	60,11	28,90
L2105102-001	74	PROTETTORE TERMICO COMPRESSORE EMT2117GK 220-240V/50HZ	THERMAL PROTECTOR EMT2117GK 220-240V/50HZ	R404A	*			*			23,41	11,26
L5105104-001	74	PROTETTORE TERMICO COMPRESSORE NEK2117GK 115V/60HZ-100V/50HZ	THERMAL PROTECTOR NEK2117GK 115V/60HZ-100V/50HZ	R404A	*		*			*	23,41	11,26
A3405101-001	74	PROTETTORE TERMICO COMPRESSORE NEK2134GK 208-230V/60HZ	THERMAL PROTECTOR NEK2134GK 208-230V/60HZ	R404A		*			*		23,41	11,26
TER2321048	74	PROTETTORE TERMICO COMPRESSORE NE2125GK 220-240V/50HZ	THERMAL PROTECTOR NE2125GK 220-240V/50HZ	R404A		*		*			23,41	11,26
A2405102-001	74	PROTETTORE TERMICO COMPRESSORE EMT2130GK 220-240V/50HZ	THERMAL PROTECTOR EMT2130GK 220-240V/50HZ	R404A		*		*			23,41	11,26
A5405101-001	74	PROTETTORE TERMICO COMPRESSORE NEK2125GK 115V/60HZ-100V/50HZ	THERMAL PROTECTOR NEK2125GK 115V/60HZ-100V/50HZ	R404A		*	*			*	23,41	11,26
L2105103-001	75	RELE' COMPRESSORE EMT2117GK 220-240V/50HZ	RELAY EMT2117GK 220-240V/50HZ	R404A	*			*			33,10	15,91
L5105105-001	75	RELE' COMPRESSORE NEK2117GK 115V/60HZ-100V/50HZ	RELAY NEK2117GK 115V/60HZ-100V/50HZ	R404A	*		*			*	33,10	15,91
A3405102-001	75	RELE' COMPRESSORE NEK2134GK 208-230V/60HZ	RELAY NEK2134GK 208-230V/60HZ	R404A		*			*		33,10	15,91
CLI2283002	75	RELE' COMPRESSORE NE2125GK 220-240V/50HZ	RELAY NE2125GK 220-240V/50HZ	R404A		*		*			33,10	15,91
A2405101-001	75	RELE' COMPRESSORE EMT2130GK 220-240V/50HZ	RELAY EMT2130GK 220-240V/50HZ	R404A		*		*			33,10	15,91
A5405102-001	75	RELE' COMPRESSORE NEK2125GK 115V/60HZ-100V/50HZ	RELAY NEK2125GK 115V/60HZ-100V/50HZ	R404A		*	*			*	33,10	15,91
L0102101-001	76	TUBO RAME D.6MM CONDENSATORE-COMPRESSORE BB1	BB1 CONDENSER COPPER PIPE D.6MM-COMPRESSOR	ALL	*			*	*		13,02	6,26

# BLarge: Listino Ricambi\Spare Part Price List Marzo\March 2016

BL

NOTA ! I prezzi in dollari sono dedicati al Mercato Americano  
NOTE ! The prices in Dollars are dedicated to the America Market

CODICE	ESP.	DESCRIZIONE	DESCRIPTION	FREON	BL1	BL2	115/ 60	230/ 50	220/ 60	100/50- 60	USD	EUR
L0202103-001	76	TUBO RAME D.6MM CONDENSATORE-COMPRESSORE BB2	BB2 CONDENSER COPPER PIPE D.6MM-COMPRESSOR	ALL		*	*	*	*	*	13,02	6,26
L0102110-001	76	TUBO RAME D.6MM CONDENSATORE-COMPRESSORE BB1	BB1 CONDENSER COPPER PIPE D.6MM-COMPRESSOR	ALL	*		*			*	12,11	5,82
DADOD.8ZFLAUT	77	DADO M8 FLANGIATO	M8 NUT	ALL	*		*		*	*	0,82	0,40
DADOD.6ZFL	77	DADO M6 FLANGIATO	M6 NUT	ALL	*			*			0,82	0,40
DADOD.8ZFLAUT	77	DADO M8 FLANGIATO	M8 NUT	ALL		*	*	*	*	*	0,82	0,40
VTTE8X35Z	78	VITE TE M8X35MM	SCREW M8X35MM	ALL	*		*		*	*	0,82	0,40
VTTE6X30	78	VITE TE M6X30MM	SCREW M6X30MM	ALL	*			*			0,82	0,40
VTTE8X35Z	78	VITE TE M8X35MM	SCREW M8X35MM	ALL		*	*	*	*	*	0,82	0,40
A0005110-001	79	MORSETTIERA PRESSOSTATO 02303611001	PRESSURE SWITCH CONNECTION WIRES	ALL	*	*	*	*	*	*	2,69	1,29
A0002101-001	80	PRESSOSTATO R404A	R404A PRESSURE SWITCH	R404A	*	*	*	*	*	*	113,25	54,45
P0202101-001	81	CONDENSATORE ARIA FERRO STFT 12118 BB1	BB1 IRON AIR CONDENSER STFT12118	ALL	*		*	*	*	*	87,17	41,91
L0002103-001	81	CONDENSATORE ARIA FERRO STFT12218 BB2	BB2 IRON AIR CONDENSER STFT12218	ALL		*	*	*	*	*	181,98	87,49
VTTE6X12Z	82	VITE TE M6X12MM	SCREW TE 6X12MM	ALL	*	*	*	*	*	*	0,82	0,40
RONDELLA6X24PIA	83	RONDELLA PIANA 6X18	FLAT WASHER 6X18MM	ALL	*			*			0,82	0,40
L0202107-001	84	TUBO RAME D.6MM TEE-FILTRO	COPPER PIPE D.6MM TEE-DRYER	ALL		*		*	*	*	12,11	5,82
L0202108-001	84	ASSIEME TUBI RAME D.6MM TEE-TEE-FILTRO BB2	KIT COPPER PIPE D.6MM CUPPER TEE-CUPPER TEE-FILTER BB2	ALL		*	*				16,77	8,06
L0102108-001	85	FILTRO ESSICCATORE BB1	BB1 DRYER	ALL	*		*	*	*	*	48,81	23,47
A0002113-001	85	FILTRO ESSICCATORE BB2	BB2 DRYER	ALL		*	*	*	*	*	56,62	27,22
L0102103-001	86	TUBO RAME D.6MM TEE-PRESSOSTATO	COPPER PIPE D.6MM TEE-PRESSURE SWITCH	ALL	*		*			*	13,02	6,26
L0102103-001	86	TUBO RAME D.6MM TEE-PRESSOSTATO	COPPER PIPE D.6MM TEE-PRESSURE SWITCH	ALL		*	*	*	*	*	13,02	6,26
A0202102-001	87	BLOCCHETTO VALVOLE 2 VIE NC DN1,2 8461-R OLAB	OLAB 2 WAY BODY VALVE NC DN1,2 8461-R	ALL		*	*	*	*	*	153,05	73,58
A0202101-001	87	BLOCCHETTO 2VIE NC CEME	CEME 2 WAY BODY VALVE NC	ALL		*	*	*	*	*	153,05	73,58
AA605101-001	88	BOBINA 5C R04/RP1 100-120/50-60HZ UR CEME	CEME COIL 5C R04/RP1 100-120/50-60HZ UR	ALL		*	*			*	45,02	21,64
AD605101-001	88	BOBINA 5C R1T/RP1 208-240V/50-60HZ UR CEME	CEME COIL 5C R1T/RP1 208-240V/50-60HZ UR	ALL		*		*	*		33,76	16,23
AF005102-001	88	BOBINA 100/50-60 CE 6000BH/E1FN OLAB	OLAB COIL 100/50-60 CE 6000BH/E1FN OLAB	ALL		*				*	45,02	21,64
AA005102-001	88	BOBINA 120/50-60 UL 11000BH/G6IU-2 OLAB	OLAB COIL 120/50-60 UL 11000BH/G6IU-2 OLAB	ALL		*	*				45,02	21,64
AD005103-001	88	BOBINA 230/50-60 CE 6000BH/K5FN OLAB	OLAB COIL 230/50-60 CE 6000BH/K5FN OLAB	ALL		*		*	*		33,76	16,23
P0002110-001	89	CAPILLARE 0,91MMX3700MM BB1	BB1 0,91MMX3700MM CAPILLARY	ALL	*		*	*	*	*	4,84	2,33
A0002109-001	89	CAPILLARE 0,91MMX5000MM BB2	BB2 0,91MMX5000MM CAPILLARY	ALL		*	*	*	*	*	14,53	6,98
TEEDIRAMED6	90	TEE RAME D.6	D.6 CUPPER TEE	ALL		*	*	*	*	*	1,35	0,65
L0105101-001	91	IMPIANTO ELETTRICO BIG BIZ 1	BIG BIZ 1 ELECTRIC INSTALLATION	ALL	*		*	*	*	*	57,20	27,50
L0105103-001	91	IMPIANTO ELETTRICO BIG BIZ 1 VERSIONE SENZA RELE POTENZA E PRESSOSTATO	BIG BIZ 1 ELECTRIC INSTALLATION	ALL	*			*	*		57,20	27,50

# BLarge: Listino Ricambi\Spare Part Price List Marzo\March 2016

BL

NOTA ! I prezzi in dollari sono dedicati al Mercato Americano  
NOTE ! The prices in Dollars are dedicated to the America Market

CODICE	ESP.	DESCRIZIONE	DESCRIPTION	FREON	BL1	BL2	115/ 60	230/ 50	220/ 60	100/50- 60	USD	EUR
L0205101-001	91	IMPIANTO ELETTRICO BIG BIZ 2	BIG BIZ 2 ELECTRIC INSTALLATION	ALL		*	*	*	*	*	77,98	37,49
A0005103-001	92	FUSIBILE f 5X20MM 315mA RAPIDO	FAST FUSE 315MA 5X20	ALL	*	*	*	*	*	*	1,79	0,86
AA005101-001	95	RELE DI POTENZA 120V 668281100300	POWER RELAY 120V 668281100300	ALL	*		*			*	31,51	15,15
M0005151-001	96	MORSETTIERA CAVO ALIMENTAZIONE	POWER CORD SCREW TERMINAL BOARD	ALL	*	*	*			*	6,64	3,19
A0006113-001	98	FILTRO ARIA NERO	BLACK PLASTIC AIR FILTER	ALL	*	*	*	*	*	*	44,13	21,22
A0006113-003	98	FILTRO ARIA GIALLO	YELLOW PLASTIC AIR FILTER	ALL	*	*	*	*	*	*	44,13	21,22
A0006113-004	98	FILTRO ARIA BLU	BLUE PLASTIC AIR FILTER	ALL	*	*	*	*	*	*	44,13	21,22
A0006113-005	98	FILTRO ARIA BIANCO	WHITE PLASTIC AIR FILTER	ALL	*	*	*	*	*	*	44,13	21,22
V4012201M3WBM	99	VENTOLA ALLUMINIO 200/34°	ALUMINUM FAN BLADE 200/34°	ALL		*	*	*	*	*	5,12	2,46
A0000115-001	100	VITE TE FLANGIATA M5X20MM	SCREW TE M5X20MM	ALL	*	*	*	*	*	*	0,82	0,3925
L0001104-001	101	STAFFA RINFORZO STRUTTURA BB2	SUPPORT BRACKET BB2 STRUCTURE	ALL		*				*	88,27	42,436
L0201109-001	102	STAFFA FISSAGGIO BLOCCHETTO VALVOLA BB2	FIXING BRACKET BODY VALVE BB2	ALL		*				*	33,10	15,914
L0201110-001	103	STAFFA FISSAGGIO MOTOVENTOLA AGGIUNTIVA BB2	FIXING BRACKET FAN MOTOR BB2	ALL		*				*	33,10	15,914
VTTE4X10Z	104	VITE BLOCCAGGIO STAFFA CON BLOCCHETTO VALVOLA OLAB	SCREW LOCK BRACKET	ALL		*				*	0,82	0,3925
L0205103-001	105	KIT IMPIANTO MOTOVENTOLA AGGIUNTIVA BB2	KIT WIRING PER FAN MOTOR BB2	ALL		*				*	22,07	10,609
DADOD.4Z	106	DADO M4 ZINCATO	M4 NUT	ALL		*				*	0,24	0,1167
LA105101-001	107	MOTOVENTILATORE AGGIUNTO 17W 115V/50-60HZ	SECOND FAN MOTOR 17W 115V/50-60HZ	ALL		*				*	91,00	43,75
B0003115-001	108	SPINA BLOCCAGGIO MOLLA	SPRING LOCKING PIN	ALL	*	*	*	*	*	*	4,37	2,10
B0003119-001	109	STAFFA RIDUZIONE APERTURA RUBINETTO	OPENING TAP REDUCTION BRACKET	ALL	*	*	*	*	*	*	14,98	7,20
B0003118-001	110	MOLLA CHIUSURA RUBINETTO	TAP CLOSING SPRING BRACKET	ALL	*	*	*	*	*	*	4,16	2,00
B0003110-002	111	ASSIEME RUBINETTO	COMPLETE TAP	ALL	*	*	*	*	*	*	150,11	72,17
D0106101-001		IMBALLO BSMART 1 / BLARGE 1		ALL	*		*	*	*	*	28,11	13,514
D0206101-001		IMBALLO BLARGE 2		ALL		*	*	*	*	*	47,13	22,66